

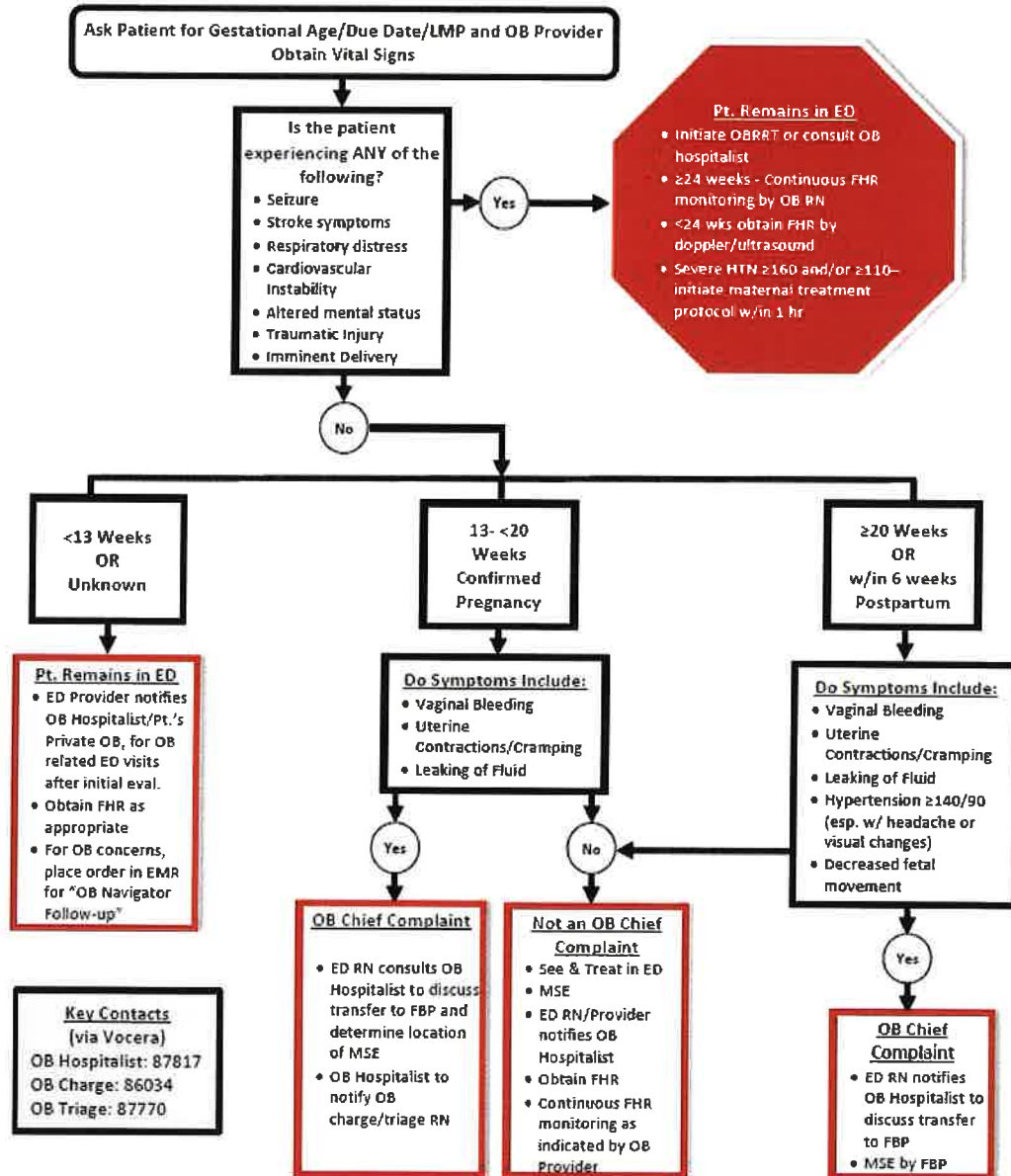
AppendixA

Obstetric Decision Tree (ED Patient)

For obstetric patients up to 6 weeks postpartum

>6 weeks up to 12 months – consider r/o cardiomyopathy

****If pt. was sent by OB Provider to FBP & presents to ED entrance, prior to registering contact ED triage RN****



Appendix B

Obstetric Decision Tree (FBP Patient)

